

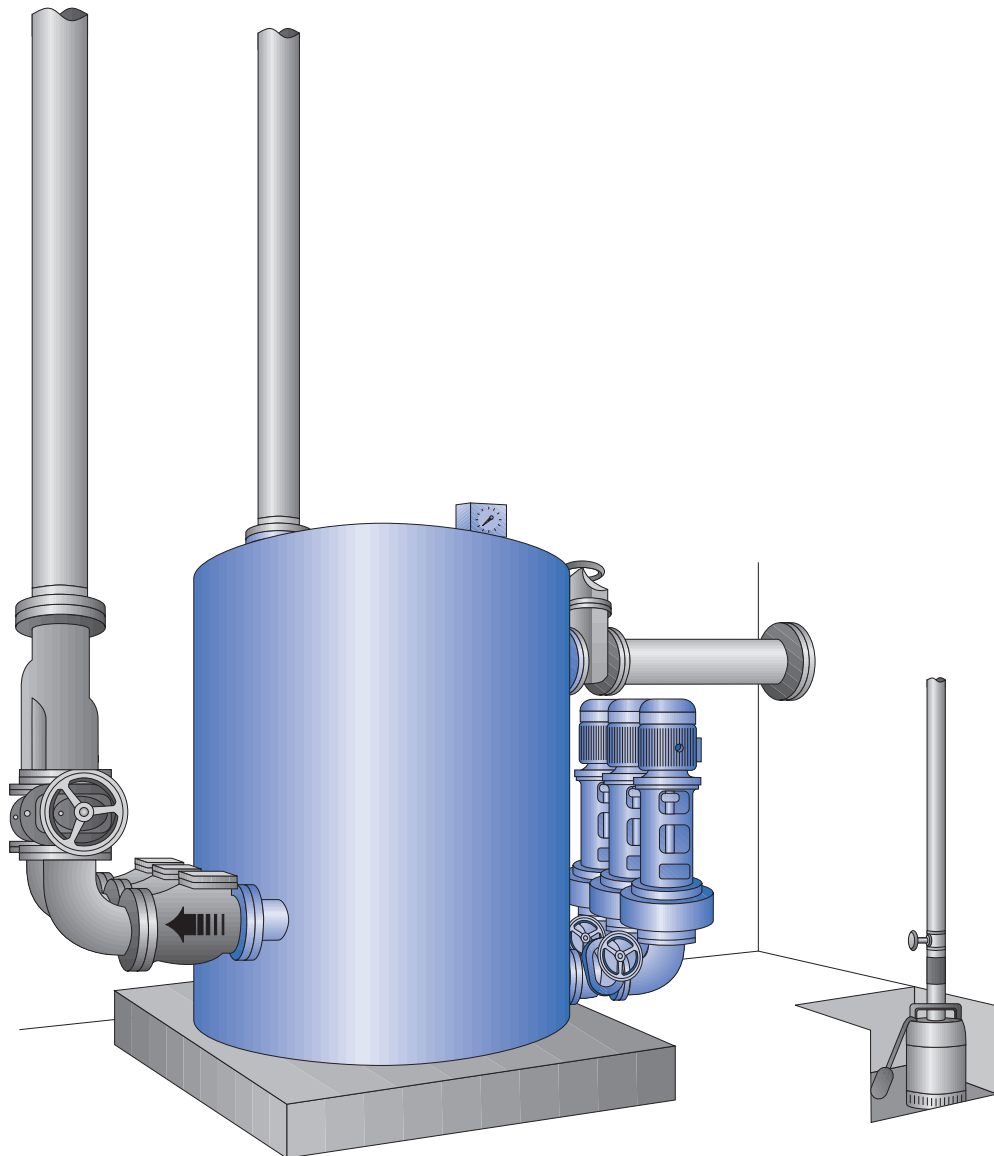
# AWALIFT 7/3

## The sewage pumping station with the STRATE system

### Area of use:

- Draining towns with up to about 16,300 residents which cannot be drained using natural gradient or as an intermediate pumping station within the context of a pressure drainage system
- Residential and industrial areas
- Towns
- Communities
- Infrastructure facilities such as airports, industrial parks, subway systems etc.

up to  
**16300 PE**



# AWALIFT 7/3

## Technical data

|                                  |   |
|----------------------------------|---|
| <b>System capacity:</b>          | 350 m <sup>3</sup> /h raw sewage, 16,300 PE |
| <b>Pumping head:</b>             | up to 40 mWS, AWALIFT 7/3x2 up to 80 WS     |
| <b>Free passage:</b>             | 200 mm                                      |
| <b>Tank dimensions:</b>          | Ø = 2500 mm x 2500 mm                       |
| <b>Tank contents:</b>            | 9,0 m <sup>3</sup>                          |
| <b>Space requirements:</b>       | 5500 mm x 4000 mm                           |
| <b>Weight:</b>                   | approx. 3500 kg                             |
| <b>Installation opening:</b>     | 2800 mm x 2800 mm                           |
| <b>Inlet height:</b>             | 1900 mm                                     |
| <b>Inlet connection:</b>         | DN 350 PN 10                                |
| <b>Pressure pipe connection:</b> | DN 250 PN 10                                |
| <b>Venting and air release:</b>  | DN 150 PN 10                                |
| <b>Electrical connection:</b>    | According to requirement                    |

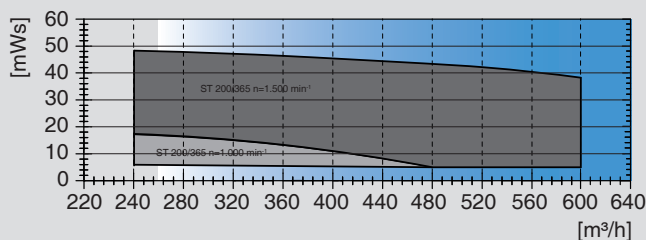
## Materials

|                                      |  |
|--------------------------------------|--|
| <b>Tank:</b>                         | S235JR (St37-2)  |
| <b>Pump:</b>                         | EN-GJL-250 (GG 25)                                     |
| <b>Coating/corrosion protection:</b> | 2-component coating on epoxy resin basis, DB 601 green |

## Characteristic curve for pump

AWALIFT 7/3

Pumping heads up to 80 mWS are achieved by switching 2 pumps in series.



Other operating points on request.

Pumps which can be used ST 200/365.

The impellers are adapted to the specific operating point.

Subject to technical modifications and errors.

## Scope of supply:

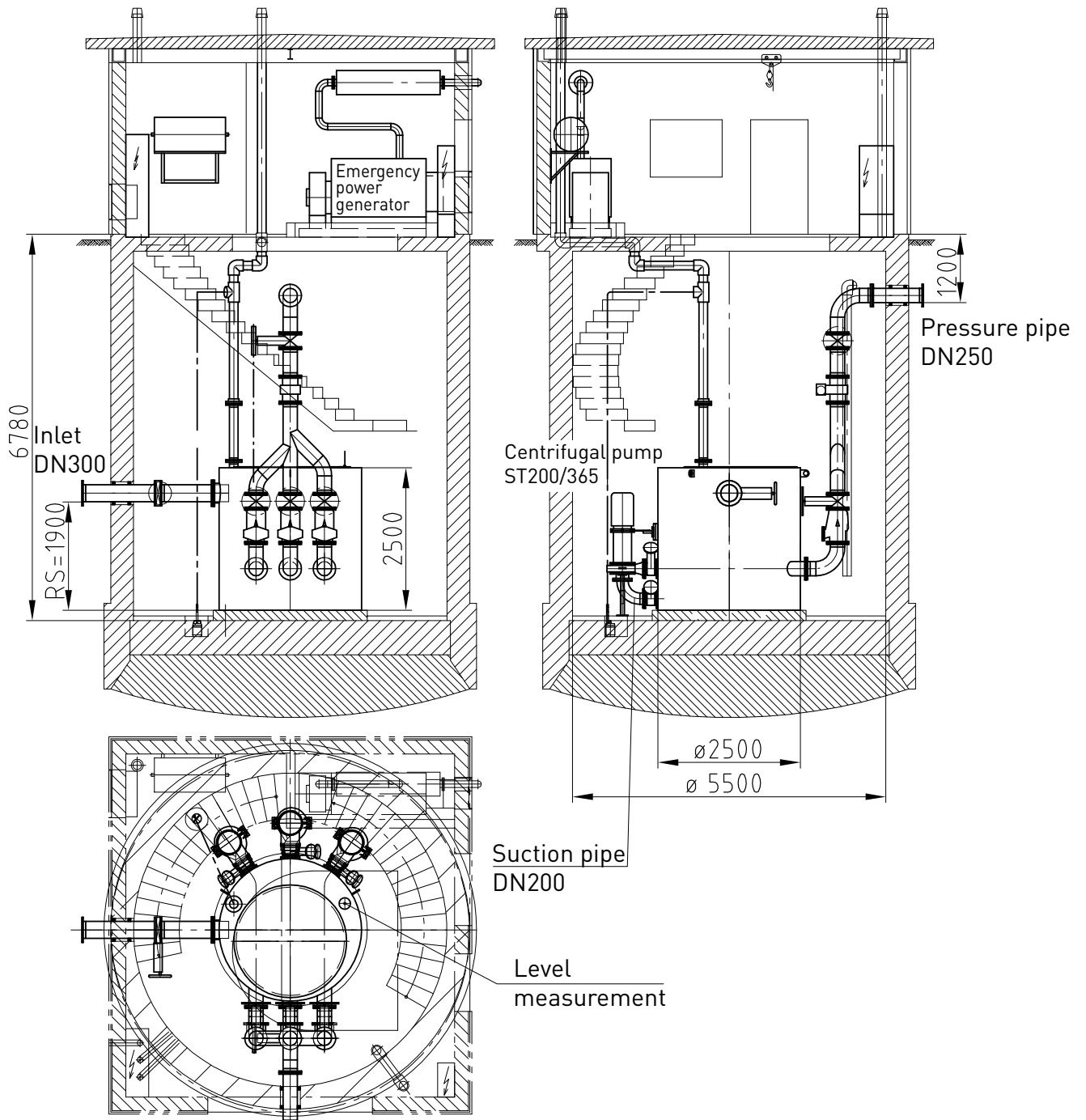
- One holding tank with three solids collecting chambers
- Three centrifugal pumps and motors according to type and operating location required
- Six pump gate valves
- Three STRATE non-return valves
- One Y-pipe DN 250
- Three pressure pipe gate valves DN 250
- Level measurement

## Accessories:

- Pump control
- Inlet gate valve DN 350
- Pipes incl. reducer and transition flanges within the building
- Pig trap
- Basement draining pump
- Alarm and monitoring systems, see control technology
- Inductive quantity measurement
- Emergency power generator
- STRATE venting systems
- STRATE AWALIFT shaft
- STRATE service building
- STRATE assembly and maintenance

Special accessories according to your requirements

# AWALIFT 7/3



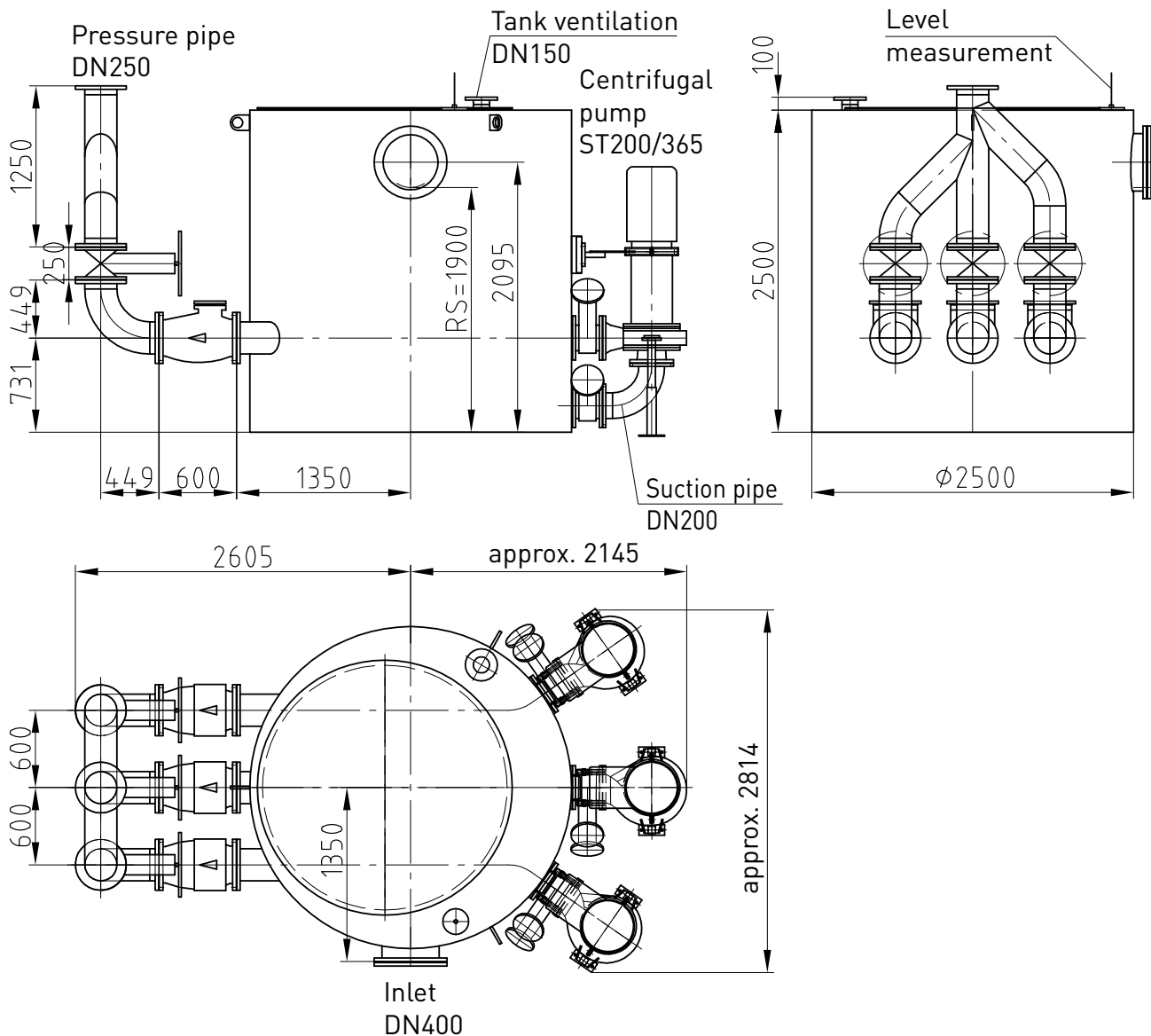
Copyright according to DIN 34

Scale:

Installation suggestion: AWALIFT 7/3

Subject to technical modifications and errors.

# AWALIFT 7/3



Dimensional drawings are available from [www.strate.com](http://www.strate.com) as dwg/dxf files.

|                               |                                  |
|-------------------------------|----------------------------------|
| Copyright according to DIN 34 | Dimensional drawing: AWALIFT 7/3 |
| Scale:                        |                                  |

Subject to technical modifications and errors.