

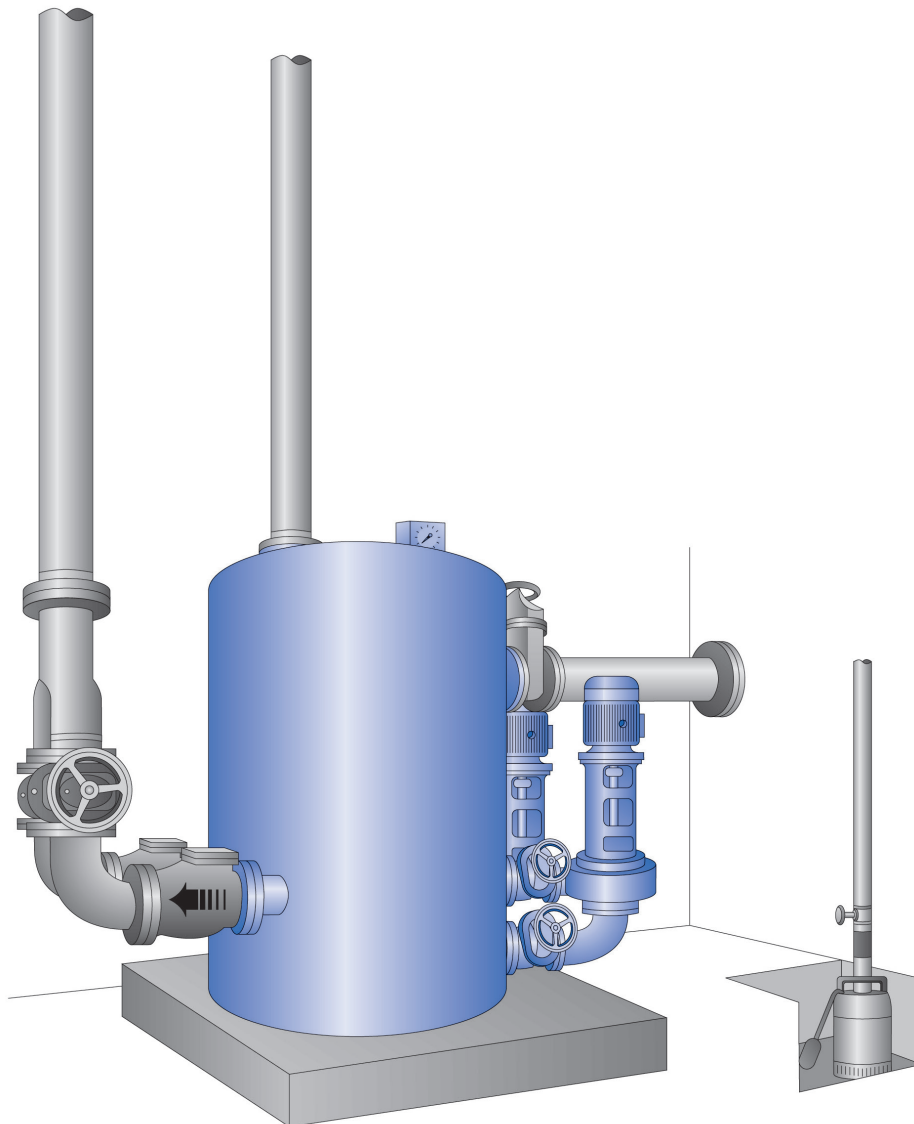
AWALIFT 3/2

The sewage pumping station with the STRATE system

Area of use:

- Draining small towns with up to about 3700 residents which cannot be drained using natural gradient or as an intermediate pumping station within the context of a pressure drainage system
- Residential and industrial areas
- Towns
- Communities
- Infrastructure facilities such as airports, industrial parks, underground stations etc.

up to
3700 PE



AWALIFT 3/2

Technical data

System capacity:	80 m ³ /h raw sewage, 3700 PE
Pumping head:	up to 80 mWS, AWALIFT 3/2x2 up to 120 mWS
Free passage:	125 mm
Tank dimensions:	Ø = 1800 mm x 2500 mm
Tank contents:	2,4 m ³
Space requirements:	3700 mm x 3000 mm
Weight:	approx. 1000 kg
Installation opening:	1700 mm x 1700 mm
Inlet height:	1600 mm
Inlet connection:	DN 200 PN 10
Pressure pipe connection:	DN 150 PN 10
Venting and air release:	DN 100 PN 10
Electrical connection:	According to requirement

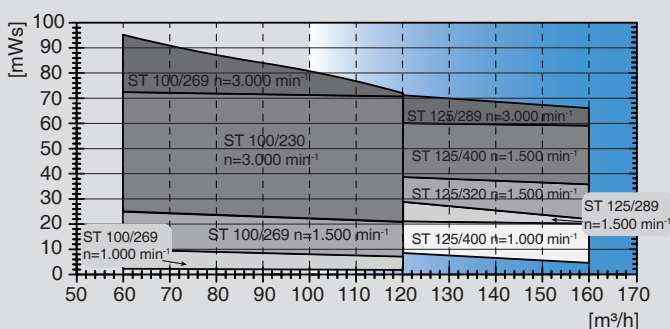
Materials

Tank:	S235JR (St37-2)
Pump:	EN-GJL-250 (GG 25)
Coating/corrosion protection:	2-component coating on epoxy resin basis, DB 601 green

Characteristic curve for pump

AWALIFT 3/2

Pumping heads up to 120 mWS are achieved by switching 2 pumps in series.



Other operating points on request.

Pumps which can be used
ST(M) 100/269,
ST 100/230,
ST(M) 125/230,
ST 125/289,
ST 125/400.

The impellers are adapted to the specific operating point.

Scope of supply:

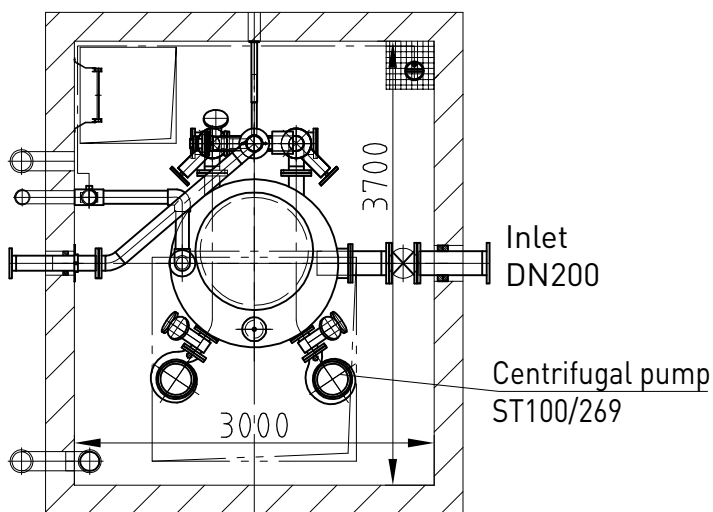
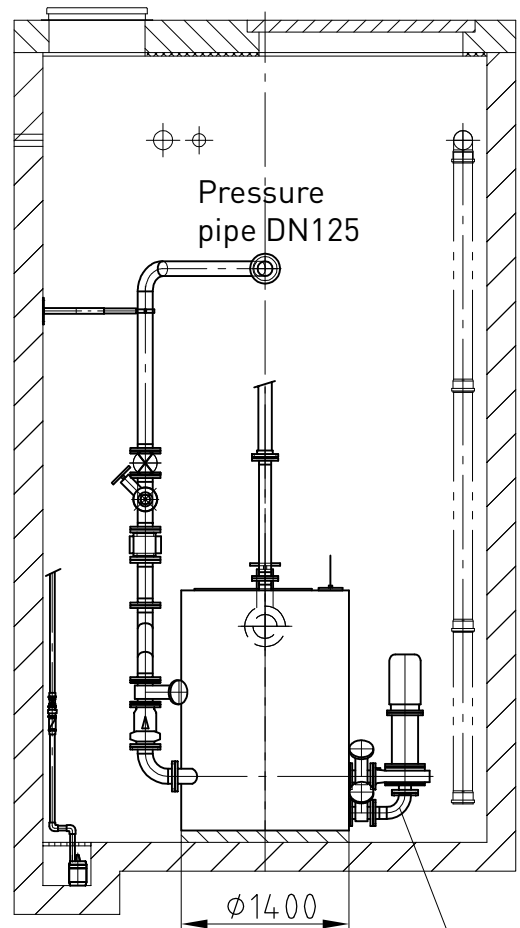
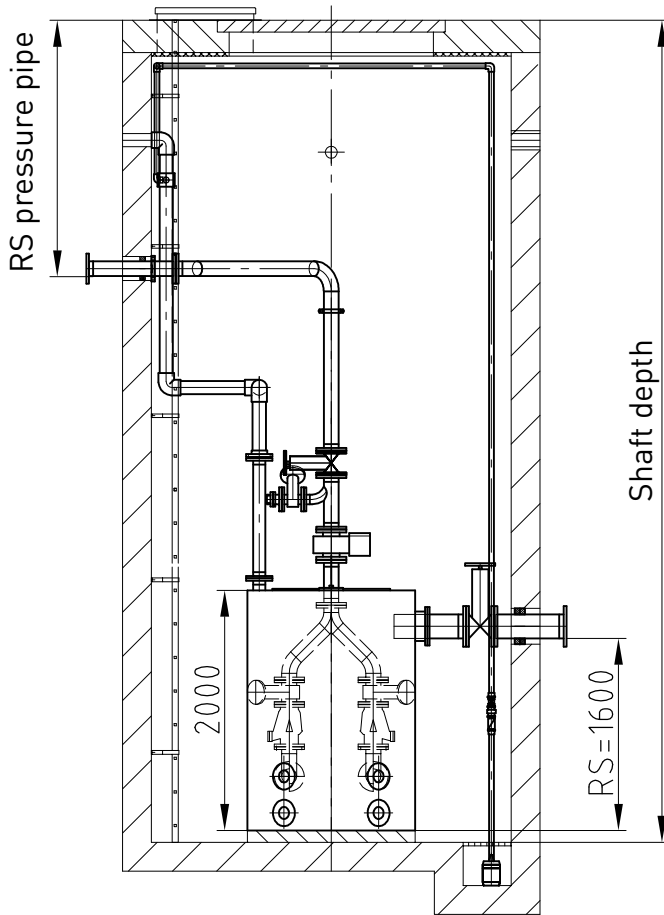
- One holding tank with two solids collecting chambers
- Two centrifugal pumps and motors according to type and operating location required
- Four pump gate valves
- Two STRATE non-return valves
- One Y-pipe DN 125
- Two pressure pipe gate valves DN 125
- Level measurement

Accessories:

- Pump control
 - Inlet gate valve DN 200
 - Pipes incl. reducer and transition flanges within the building
 - Pig trap
 - Basement draining pump
 - Alarm and monitoring systems, see control technology
 - Inductive quantity measurement
 - Emergency power generator
 - STRATE venting systems
 - STRATE AWALIFT shaft
 - STRATE service building
 - STRATE assembly and maintenance
- Special accessories according to your requirements

Subject to technical modifications and errors.

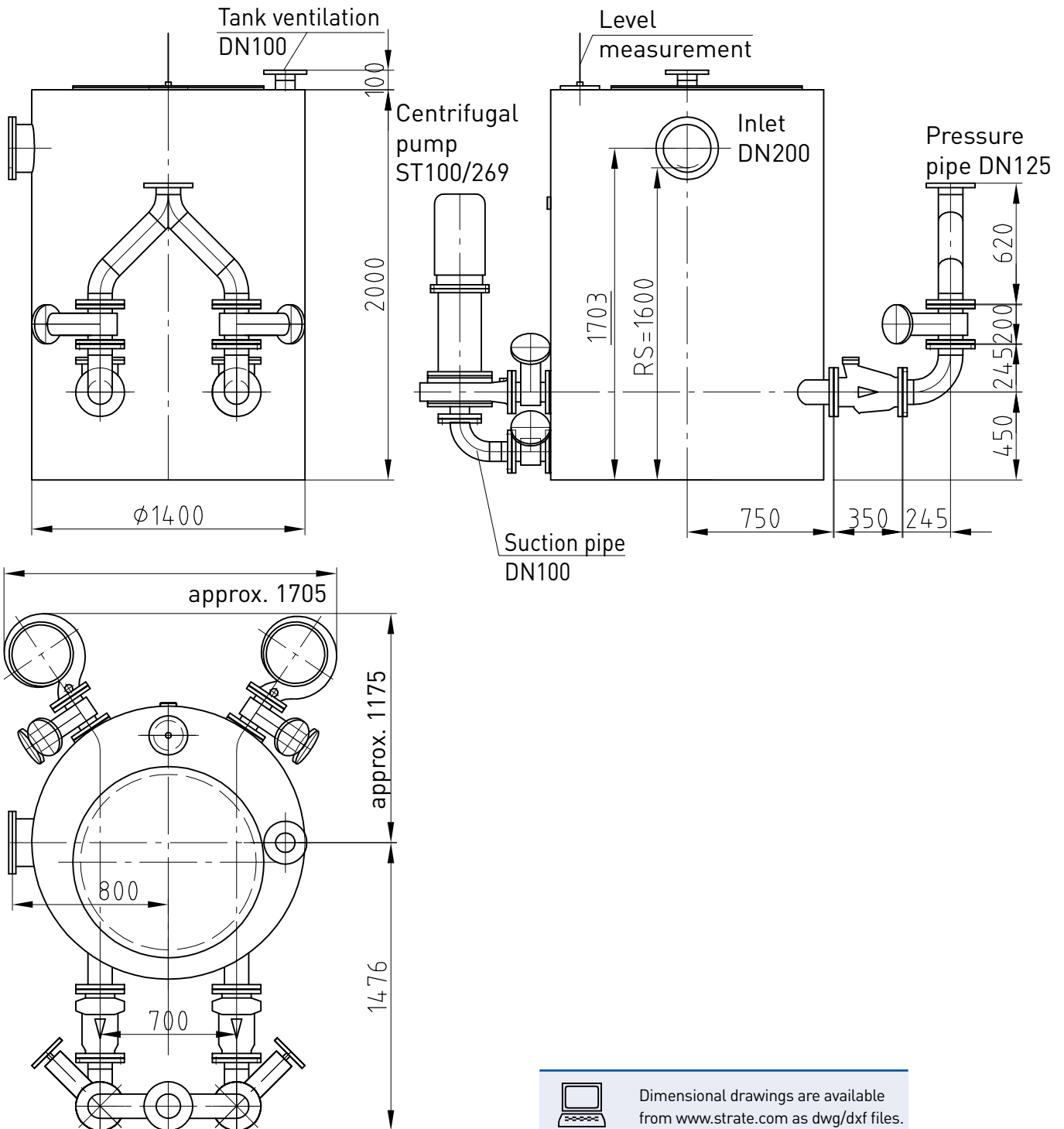
AWALIFT 3/2




Copyright according to DIN 34	Installation suggestion: AWALIFT 3/2 in the AWALIFTSCHACHT
Scale:	

Subject to technical modifications and errors.

AWALIFT 3/2



 Dimensional drawings are available from www.strate.com as dwg/dxf files.

Copyright according to DIN 34	Dimensional drawing: AWALIFT 3/2
Scale:	

Subject to technical modifications and errors.