

# AWALIFT 1/2

## The sewage pumping station with the STRATE system

### Area of use:

- Larger buildings, industrial companies, individual streets
- Facilities that cannot be drained using natural gradient
- As protection from backwater damage
- Infrastructure facilities such as airports, industrial parks, subway systems etc.

up to  
**750 EW**



# AWALIFT 1/2

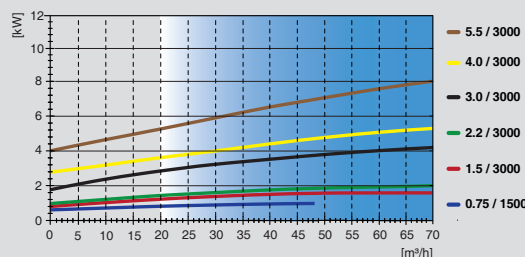
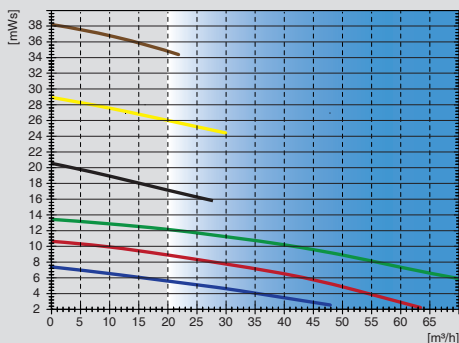
## Technical data

<b>System capacity:</b>	15 m <sup>3</sup> /h - 750 PE
<b>Pumping head:</b>	up to 70 mWS
<b>Free passage:</b>	100 mm
<b>Tank dimensions (LxWxH):</b>	L = 1400 mm, B = 800 mm, H = 1000 mm
<b>Tank contents:</b>	430 l
<b>Space requirements:</b>	2000 mm x 2000 mm, oder Ø 2000 mm
<b>Weight:</b>	approx. 520 kg
<b>Installation opening:</b>	1500 mm x 1000 mm
<b>Inlet height:</b>	750 mm (pipe bottom DN 150), 700 mm (pipe bottom DN 200)
<b>Inlet connection:</b>	Flange DN 150 (optionally DN 200 PN 10)
<b>Pressure pipe connection:</b>	Flange DN 100 PN 10
<b>Venting and air release:</b>	DN 65 or DN 70

## Materials

<b>Tank:</b>	S235JR (St37-2)
<b>Pump:</b>	EN-GJL-250 (GG25), EN-GJL-400-15 (GGG40)
<b>Coating / corrosion protection:</b>	EKB 6011, DB 601 green
<b>Electrical connection:</b>	230/400V, 50 Hz, 400/690V, 50 Hz
<b>Motor capacity:</b>	IP 67 1,50 kW, 2,20 kW, 3,00 kW – 1500 min <sup>-1</sup> IP 67 3,00 kW – 3000 min <sup>-1</sup> IP 55 4,0 kW, 5,5 kW, 7,5 kW, 11,0 kW, 15,0 kW, 18,5 kW – 3000 min <sup>-1</sup>

## Characteristic curve for pump



Other operating points on request. Pumps from the series ST(M) 65/80 that can be used. The impellers are adapted to the specific operating point.

## Scope of supply:

- One tank with two solids collecting chambers
- Two rotary pumps and motors according to type and operating location required
- Two non-return valves AWASTOP DN 100 K
- Y-pipe DN 100
- Two pressure pipe gate valves DN 100
- Level measurement

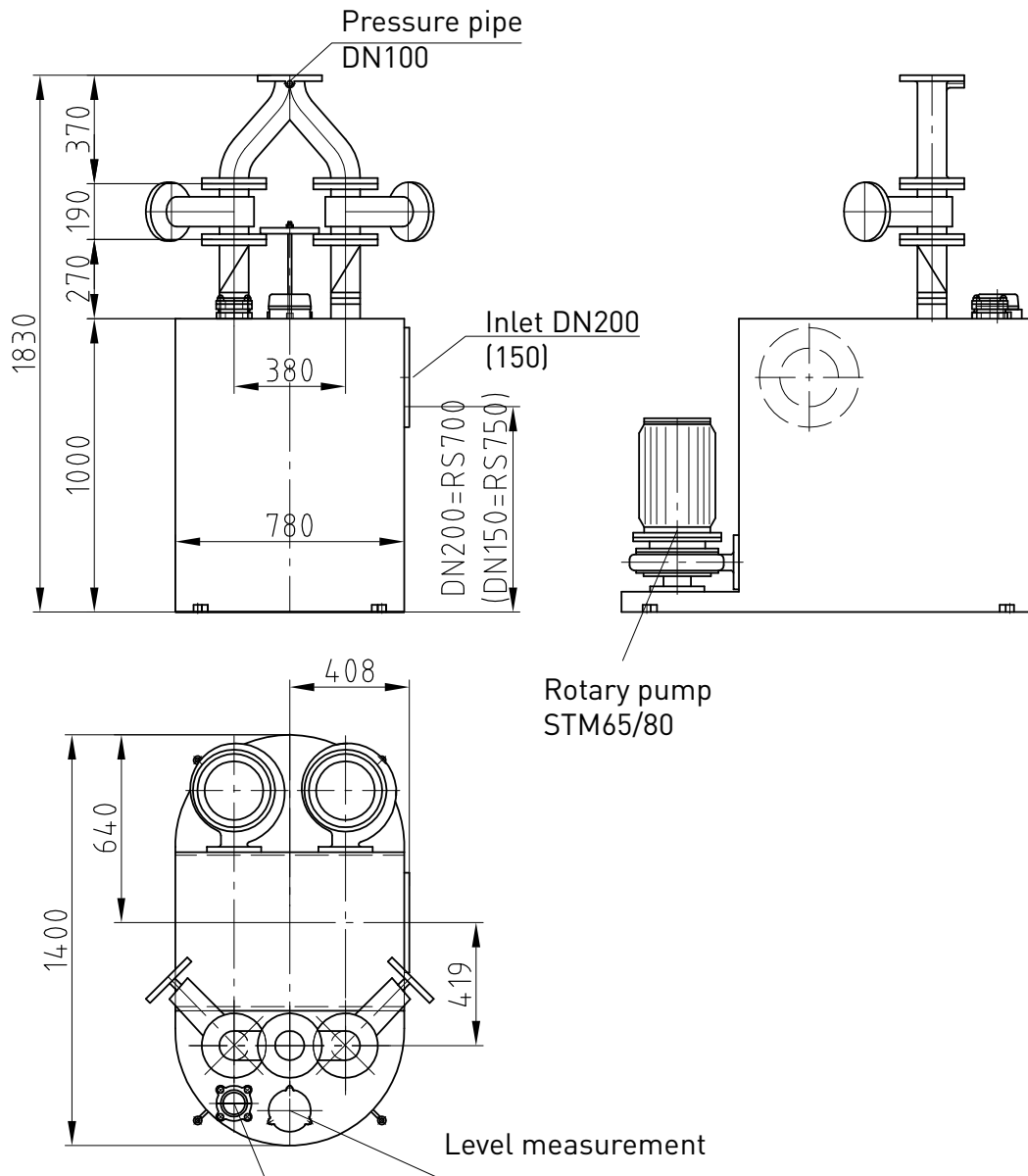
## Accessories:

- Pump control
- Pipe incl. reducer and transition flanges within the building
- Alarm and monitoring systems, see control technology
- Inductive quantity measurement
- Emergency power generators
- STRATE venting systems for the pressure pipe
- STRATE AWALIFT shaft
- STRATE service building
- STRATE assembly and maintenance
- STRATE venting and air release valves
- Energy supply company service connection

Special accessories according to your

Subject to technical modifications and errors.

# AWALIFT 1/2



Tank ventilation  
PVC, DN65

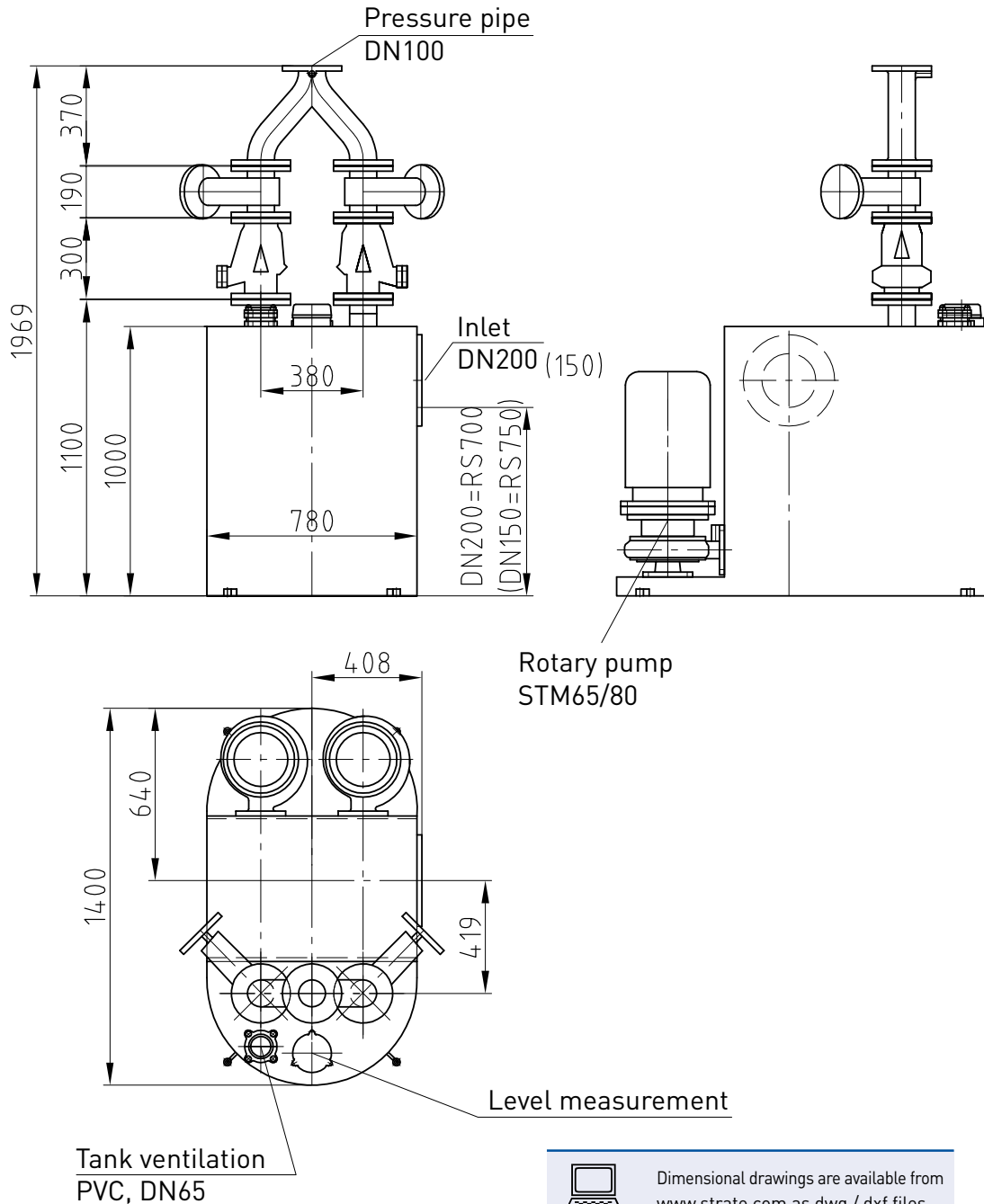


Dimensional drawings are available from  
[www.strate.com](http://www.strate.com) as dwg / dxf files.

Copyright according to DIN 34	Dimensional drawing: AWALIFT 1/2
Scale:	

Subject to technical modifications and errors.

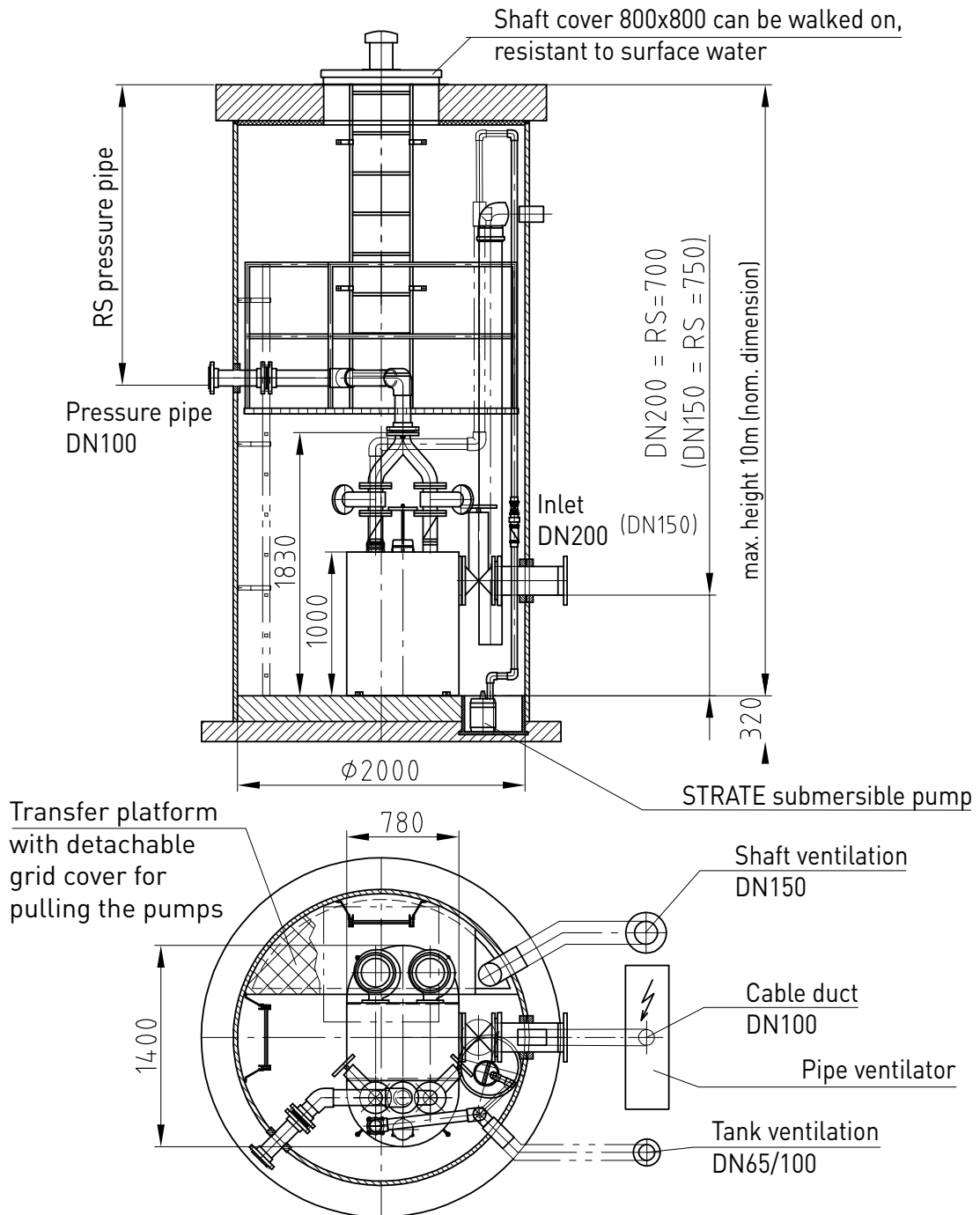
# AWALIFT 1/2



<b>Copyright according to DIN 34</b>	Dimensional drawing: AWALIFT 1/2 - version HD
<b>Scale:</b>	

Subject to technical modifications and errors.

# AWALIFT 1/2

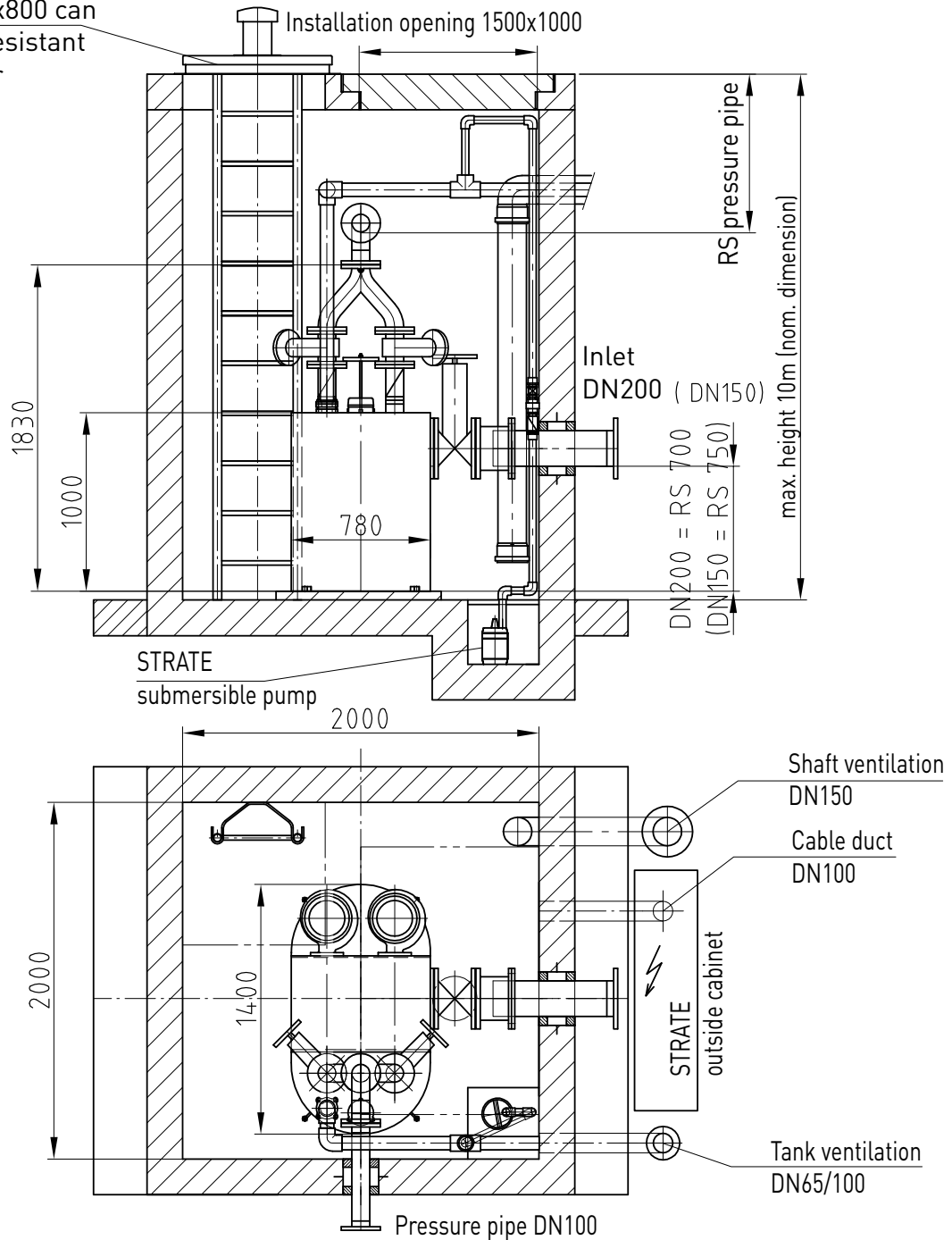


Copyright according to DIN 34	Installation suggestion: AWALIFT 1/2 in the AWALIFTSCHACHT 2000, pre-assembled ready for operation
Scale:	

Subject to technical modifications and errors.

# AWALIFT 1/2

Shaft cover 800x800 can be walked on, resistant to surface water



Copyright according to DIN 34	Installation suggestion: AWALIFT 1/2
Scale:	

Subject to technical modifications and errors.