

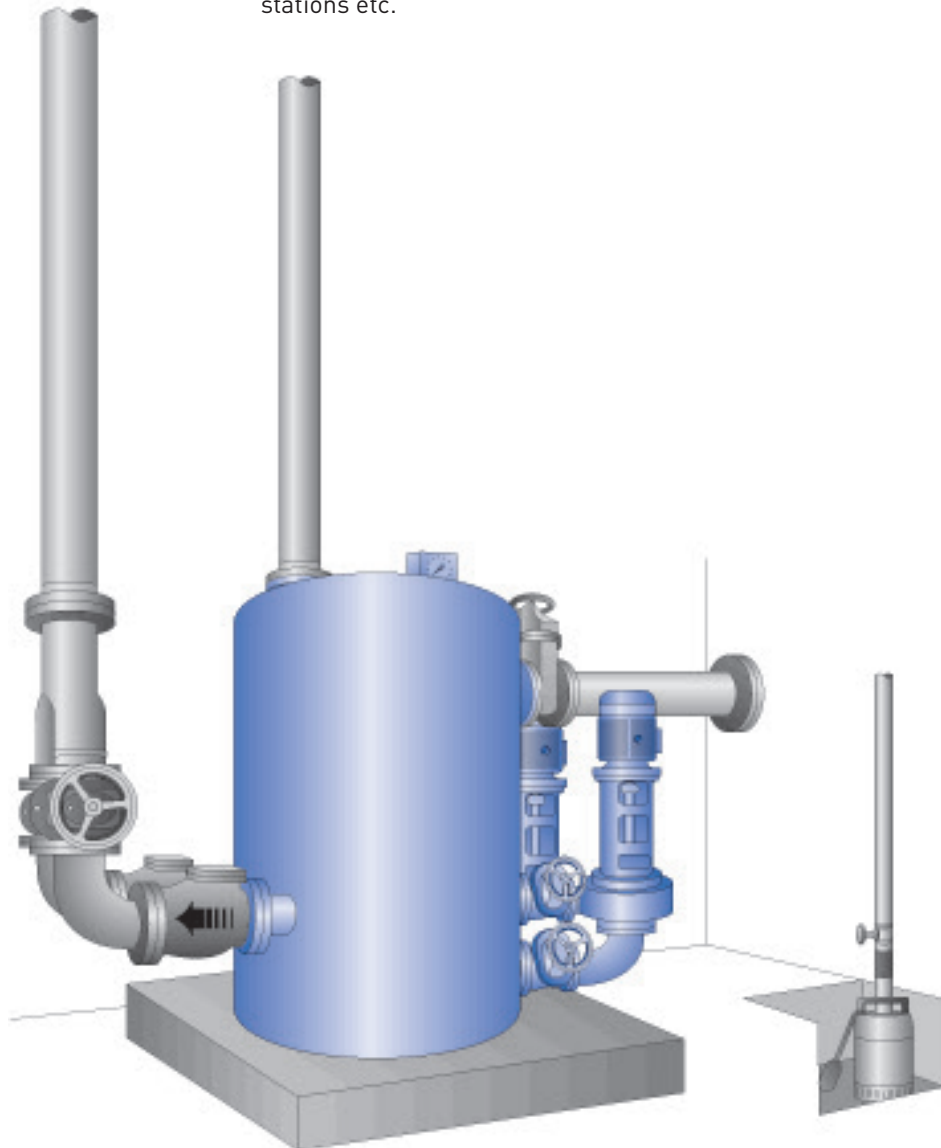
AWALIFT 2/2 round

The sewage pumping station with the STRATE system

Area of use:

- Draining small towns with up to about 2800 residents which cannot be drained using natural gradient or as an intermediate pumping station within the context of a pressure drainage system
- Residential and industrial areas
- Towns
- Communities
- Infrastructure facilities such as airports, industrial parks, underground stations etc.

up to
2800 PE



AWALIFT 2/2 round

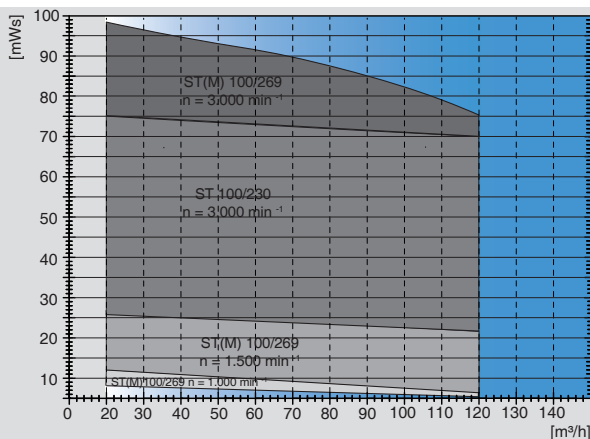
Technical data

System capacity:	60 m ³ /h raw sewage, 2800 PE
Pumping head:	up to 80 mWS
Free passage:	100 mm bzw. 125 mm
Tank dimensions:	Ø = 1250 mm x 1500 mm
Tank contents:	1,4 m ³
Space requirements:	Ø 3500 mm x 2500 mm
Weight:	approx. 800 kg
Installation opening:	1500 mm x 1500 mm
Inlet height:	1200 mm
Inlet connection:	DN 200 PN 10
Pressure pipe connection:	DN 100 PN 10 or DN 125 PN 10
Venting and air release:	DN 100 PN 10
Electrical connection:	According to requirement

Materials

Tank:	S235JR (St37-2)
Pump:	EN-GJL-250 (GG25),
Coating/corrosion protection:	2-component coating on epoxy resin basis, DB 601 green

Characteristic curve for pump



Other operating points on request. Pumps which can be used ST(M)100/269, ST 100/230. The impellers are adapted to the specific operating

Scope of supply:

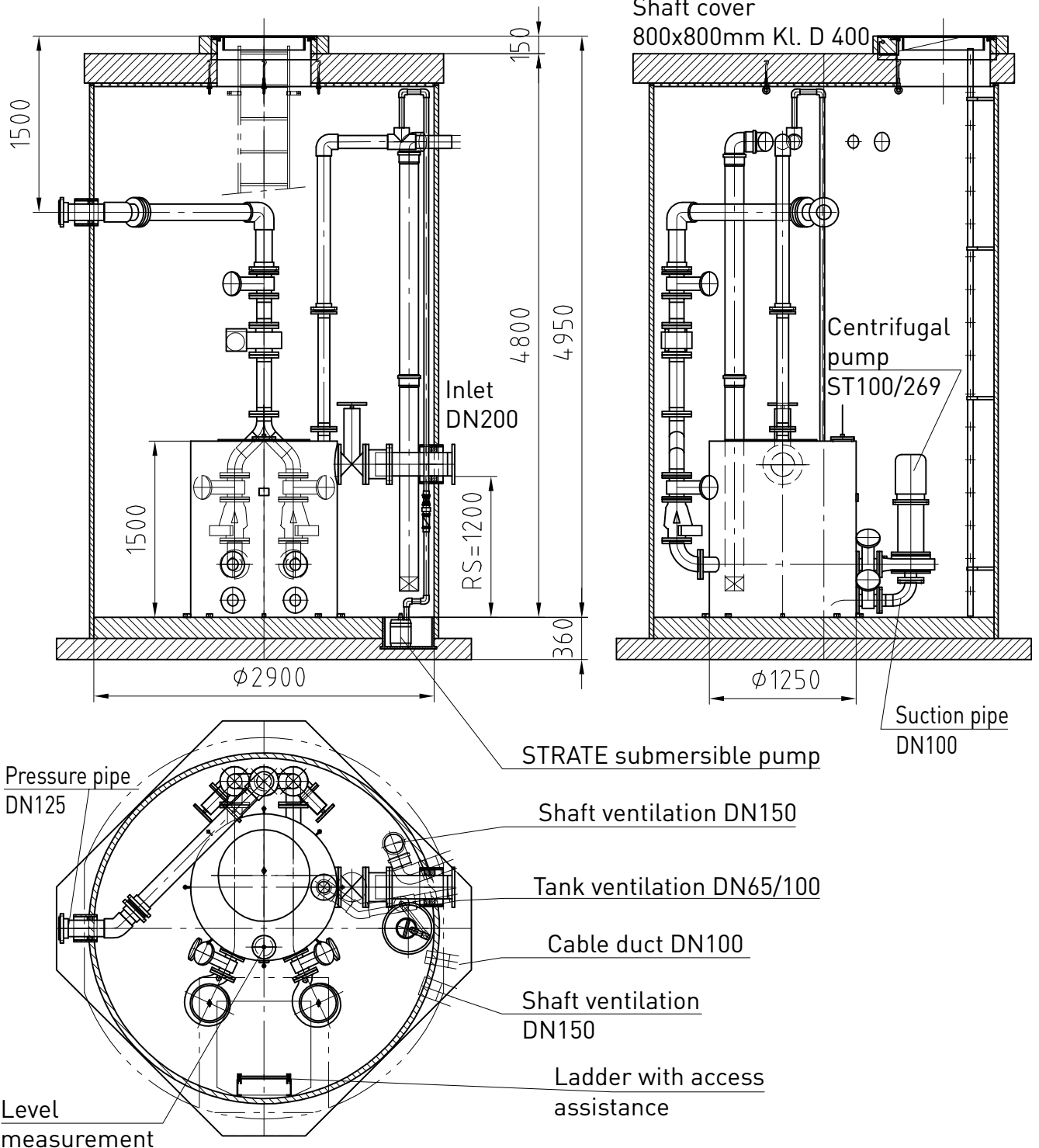
- One holding tank with two solids collecting chambers
- Two centrifugal pumps and motors according to type and operating location required
- Four pump gate valves
- Two STRATE non-return valves
- One Y-pipe DN 100
- Two pressure pipe gate valves DN 100
- Level measurement

Accessories:

- Pump control
 - Inlet gate valve DN 200
 - Pipes incl. reducer and transition flanges within the building
 - Pig trap
 - Basement draining pump
 - Alarm and monitoring systems, see control technology
 - Inductive quantity measurement
 - Emergency power generator
 - STRATE venting systems
 - STRATE AWALIFT shaft
 - STRATE service building
 - STRATE assembly and maintenance
- Special accessories according to your requirements

Subject to technical modifications and errors.

AWALIFT 2/2 round



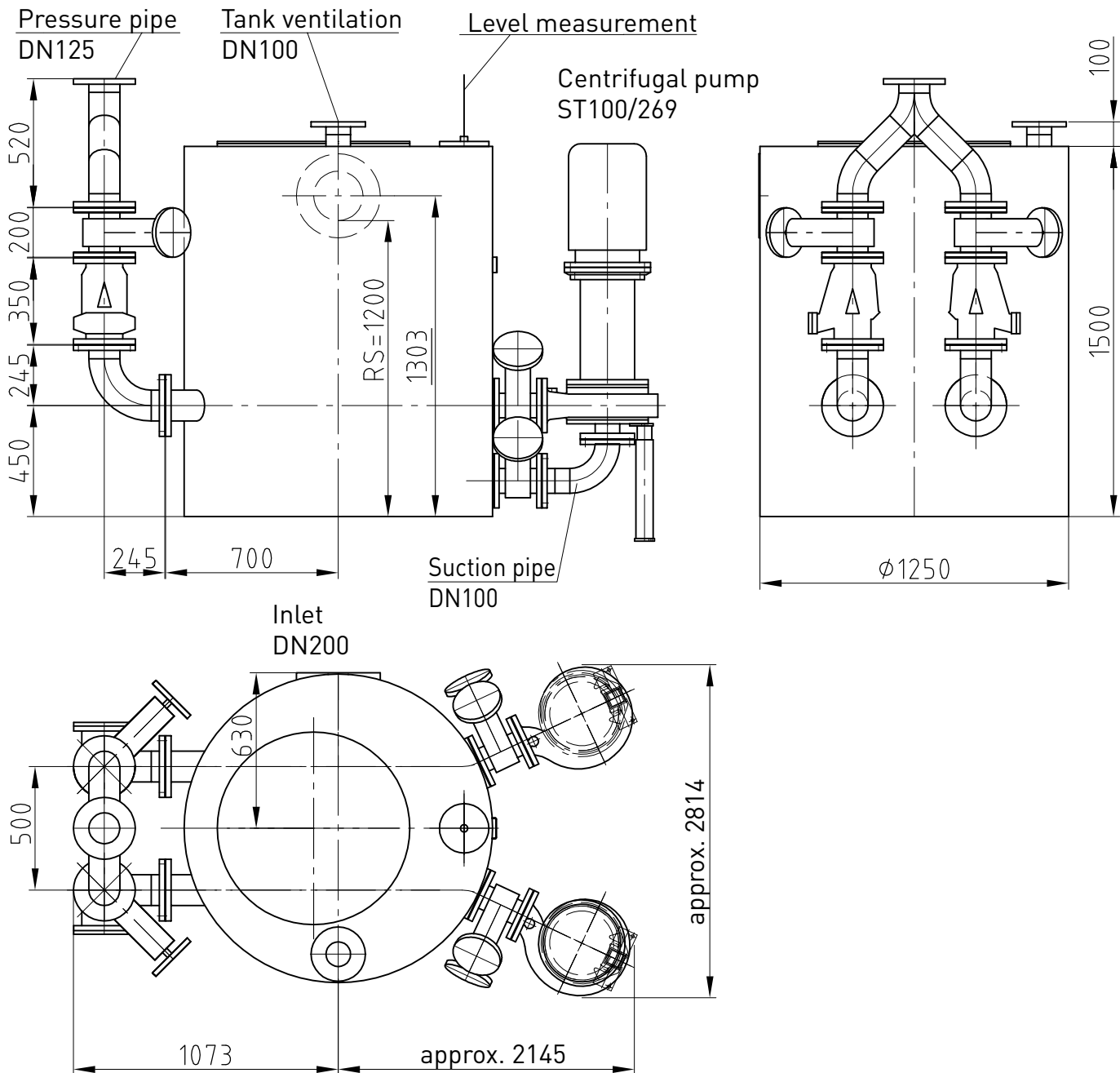
Copyright according to DIN 34

Scale:

Installation suggestion: AWALIFT 2/2 round
in the AWALIFTSCHACHT 2900

Subject to technical modifications and errors.

AWALIFT 2/2 round



Dimensional drawings are available from www.strate.com as dwg/dxf files.

Copyright according to DIN 34	Dimensional drawing: AWALIFT 2/2 round
Scale:	

Subject to technical modifications and errors.