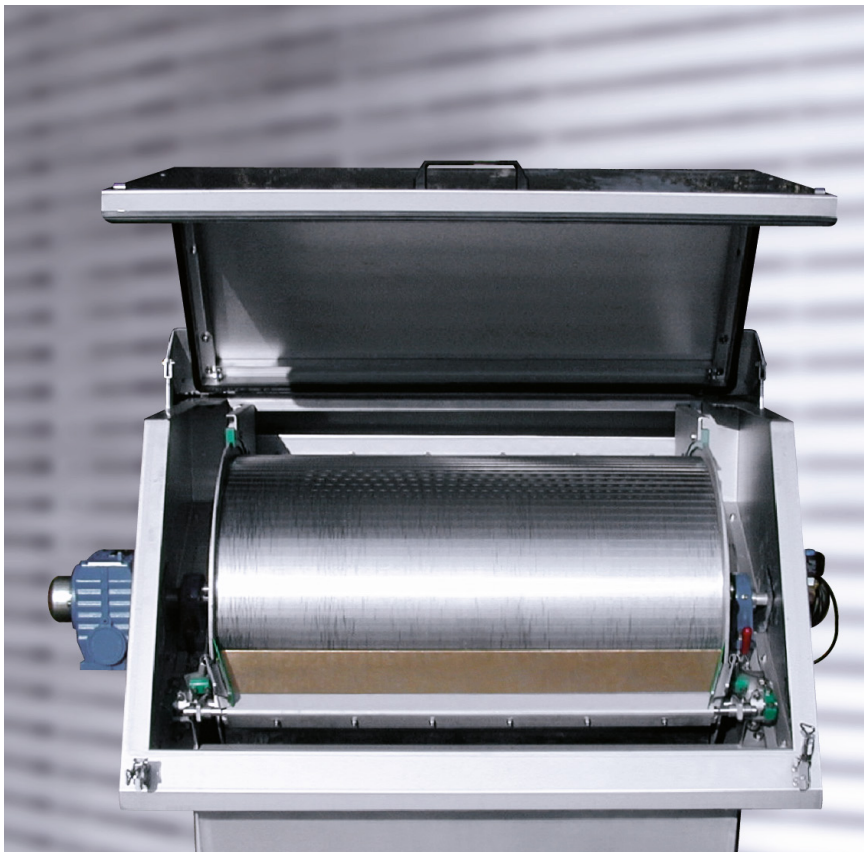


## Noggerath® Rotary Drum Screen RSH-E

Separation and discharge of solids or contaminants from a wastewater stream for further disposal or recycling.



The Noggerath® Rotary Drum Screen RSH-E is a tried and tested continuously operating screening system with an automatic cleaning device which reliably separates floating, greasy and sticky solids.

The process water or wastewater enters the screen via the headbox, overflowing onto the wedgewire screen drum where solids are effectively separated. The separated solids are then transported through the wedge-wire screen drum to the solids scraper blade the continuous gentle rotation of the screen drum. Screened solids are then dropped into a dumpster, screening wash press, compactor or conveyor. The rotary screening drum is driven by a side-mounted geared motor. An internal water spraying system is integrated into the screening drum.

---

### Benefits

- Low operation and maintenance costs
- Compact, well-designed construction:
  - integrated emergency overflow
  - full encapsulation prevents dripping water loss
- Integrated spiral press optional
- Automatic doctor blade cleaning optional

---

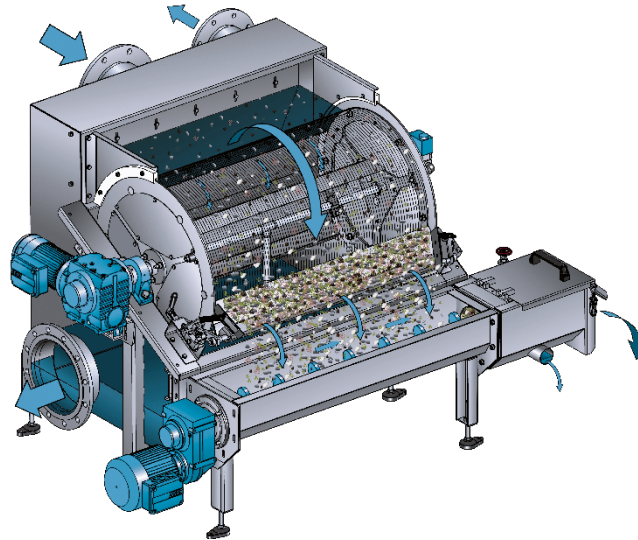
### Fields of operation

- Food and beverage industry
- Chemical industry
- Municipal wastewater treatment / Sludge Sieving
- Abattoirs

## Product variants & design sizes

<b>Drum diameter</b>	600; 1000 mm
<b>Drum length</b>	300 – 3000 m
<b>Screen mesh width</b>	0,25 – 2,5 mm
<b>Flow rate</b>	up to 2000 m <sup>3</sup> /h

The Noggerath® Rotary Drum Screen RSH-ED is additionally equipped with an integrated Spiral Press SCD for the dewatering of screenings.



Variation with an integrated Spiral Press RSH-ED

## Materials

<b>Components in contact with the medium</b>	Stainless steel AISI 304, AISI 316L Others on request
<b>Doctor blade</b>	Bronze
<b>Guide bars and overflow weir</b>	HDPE

## Options

- Spray bar with solenoid valve for automatic spray cycling
- Integrated level measurement for automatic screen operation
- Emergency bypass as an extension of the emergency overflow
- Adjustable speed control by means of variable speed geared motor
- Reversing motor
- Stainless steel bearing in polymer casing
- Flat inlet chamber for solids which tend to sediment
- Automatic doctor blade cleaning (ADBC)

## Aqseptence Group GmbH Water Treatment Systems

Ziegeleiweg 2  
31675 Bueckeburg · Germany  
Phone +49 5722 882 0  
Fax +49 5722 882 282  
noggerath@aqseptence.com

[www.aqseptence.com](http://www.aqseptence.com)



Version 1.2

The technical data stated in this brochure are indicative only and have to be determined for each individual case.  
Reserve technical changes.