

AWALIFT 100

The small sewage pumping station with the STRATE system

Area of use:

The STRATE AWALIFT 100 is the system preferred for draining storeys, houses and plots of land below the backwater level in accordance with DIN 1986-100, i.e. for properties that cannot be drained using natural gradient. DIN EN 12056-4 specifies the backwater level here as being the road surface of the connection point to the public sewage system.

- Single-family homes (e.g. toilet, shower, bath, sink, washing machine)
- Basement flat
- Party rooms in the basement
- Two-family homes

up to
20 PE



AWALIFT 100

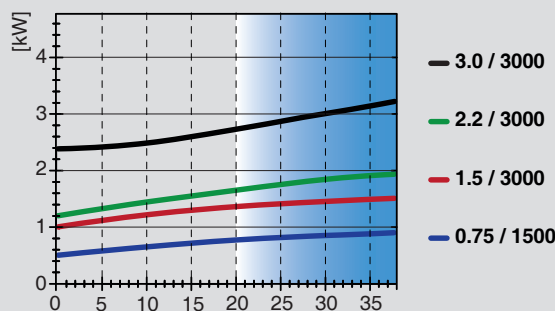
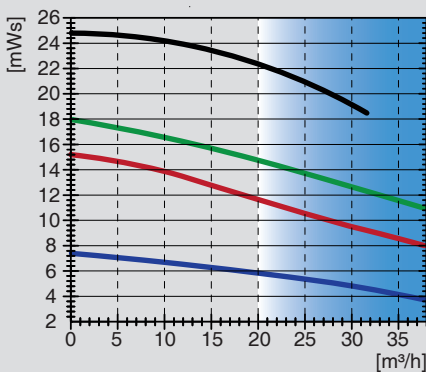
Technical data

System capacity:	0,4 m ³ /h - 20 PE
Pumping head:	up to 16 mWS
Free passage:	100 mm
Tank dimensions (LxWxH):	L = 800 mm, B = 420 mm, H = 200 mm
Tank contents:	48 l
Space requirements:	1000 mm x 700 mm, oder Ø 1200 mm
Weight:	approx. 78 kg
Installation opening:	600 mm x 900 mm
Inlet height:	200 mm (pipe bottom)
Inlet connection:	Sleeve for plastic connection pipe
Pressure pipe connection:	Flange DN 100 PN 10
Venting and air release:	DN 65 or DN 70

Materials

Tank:	G-Al Si12 (Alu230)
Pump:	EN-GJL-250 (GG25)
Coating / corrosion protection:	Acrylic combination paint coating, RAL 6011 green
Electrical connection:	230/400V, 50 Hz
Motor capacity:	IP 67 0,75 kW – 1500 min ⁻¹ IP 67 1,50 kW – 3000 min ⁻¹ IP 67 2,20 kW – 3000 min ⁻¹
AC version:	230V, 50 Hz, IP 55 1,00 kW – 1500 min ⁻¹

Characteristic curve for pump



Other operating points on request.
Pumps from the series STM 65/80 that can be used.
The impellers are adapted to the specific operating point.

Scope of supply:

- One tank with solids collecting chamber
- One centrifugal pump and motor according to type and operating location required
- One non-return valve AWASTOP DN 100 K
- Level measurement
- Pump control type AWAmaster 1 1.5 m power supply cable, with CEE plug

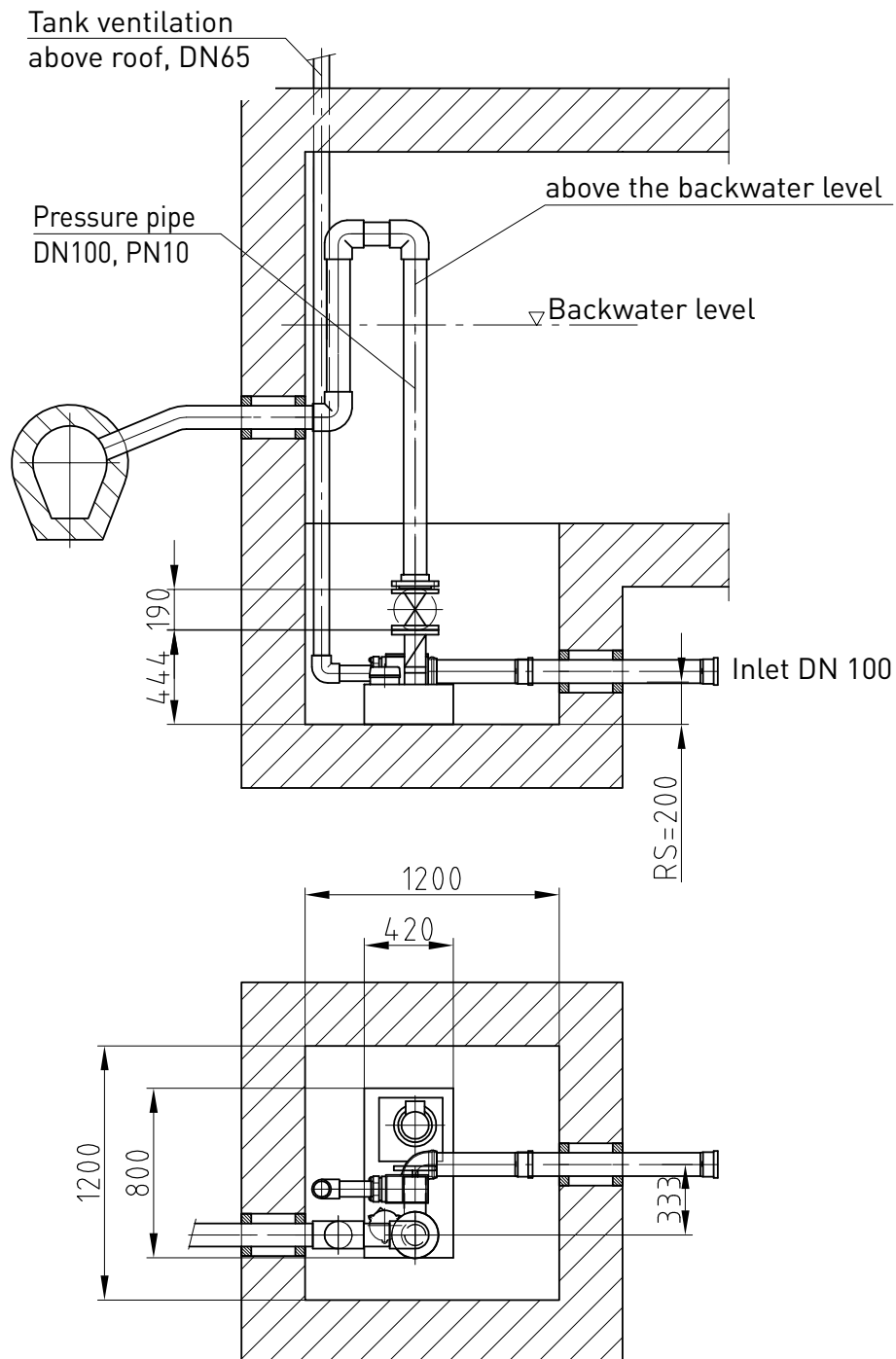
Accessories:

- Inlet connector piece DN 100
- Valve connector piece DN 10
- Inlet gate valve DN 100
- Pressure pipe connector piece DN 100
- Pressure pipe gate valve DN 100
- Manual diaphragm pump 1 1/2"
- Basement draining pump
- Alarm and monitoring systems, see-control technology
- STRATE AWALIFT-Shaft
- STRATE service building
- STRATE assembly and maintenance

Special accessories according to your requirements

Subject to technical modifications and errors.

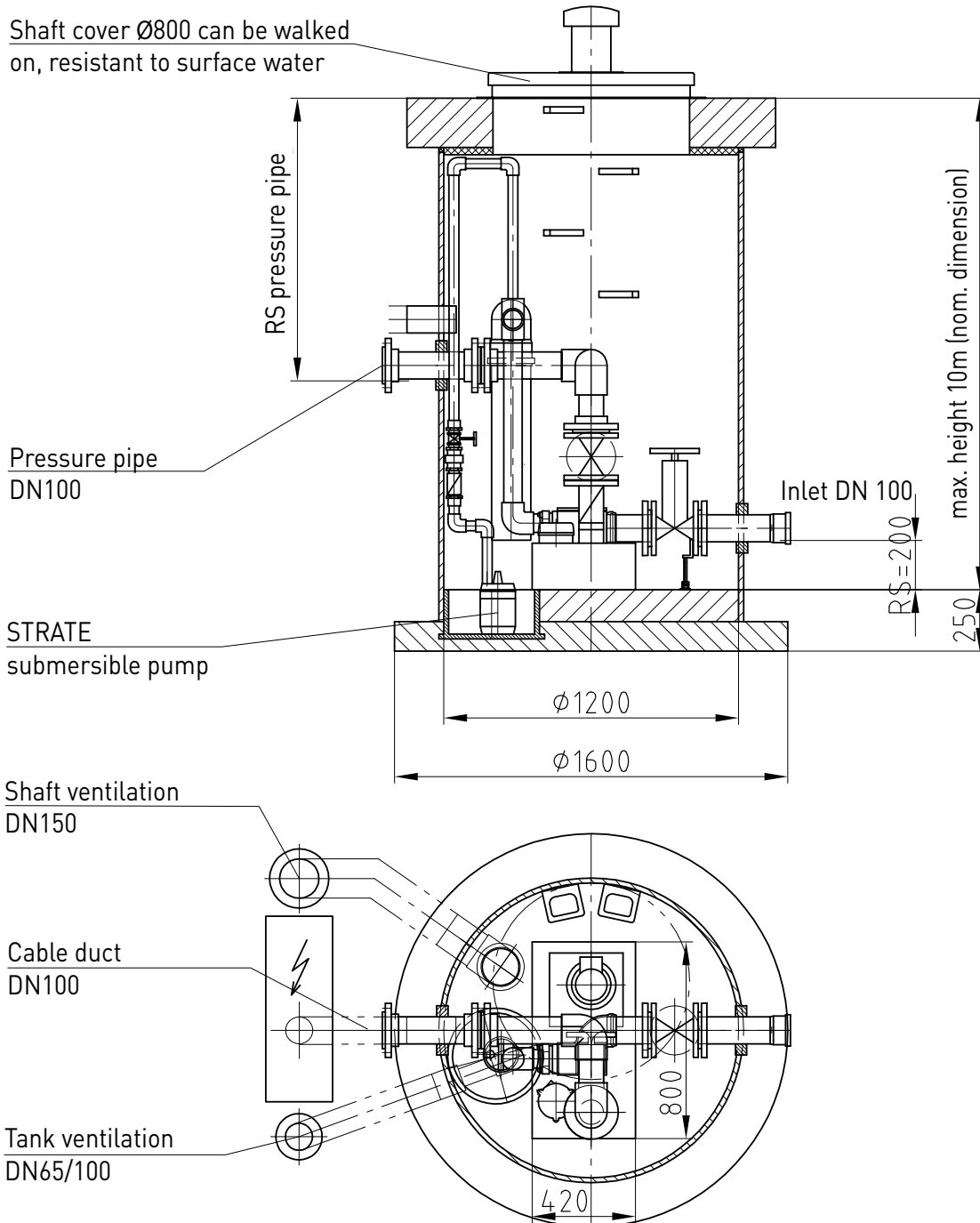
AWALIFT 100



Copyright according to DIN 34	Installation suggestion:	AWALIFT 100 Set-up within a building
Scale:		

Subject to technical modifications and errors.

AWALIFT 100



Copyright according to DIN 34	Planning suggestion: Complete pumping station AWALIFT 100 in the AWALIFTSCHACHT 1200, pre-assembled ready for operation
Scale:	

Subject to technical modifications and errors.